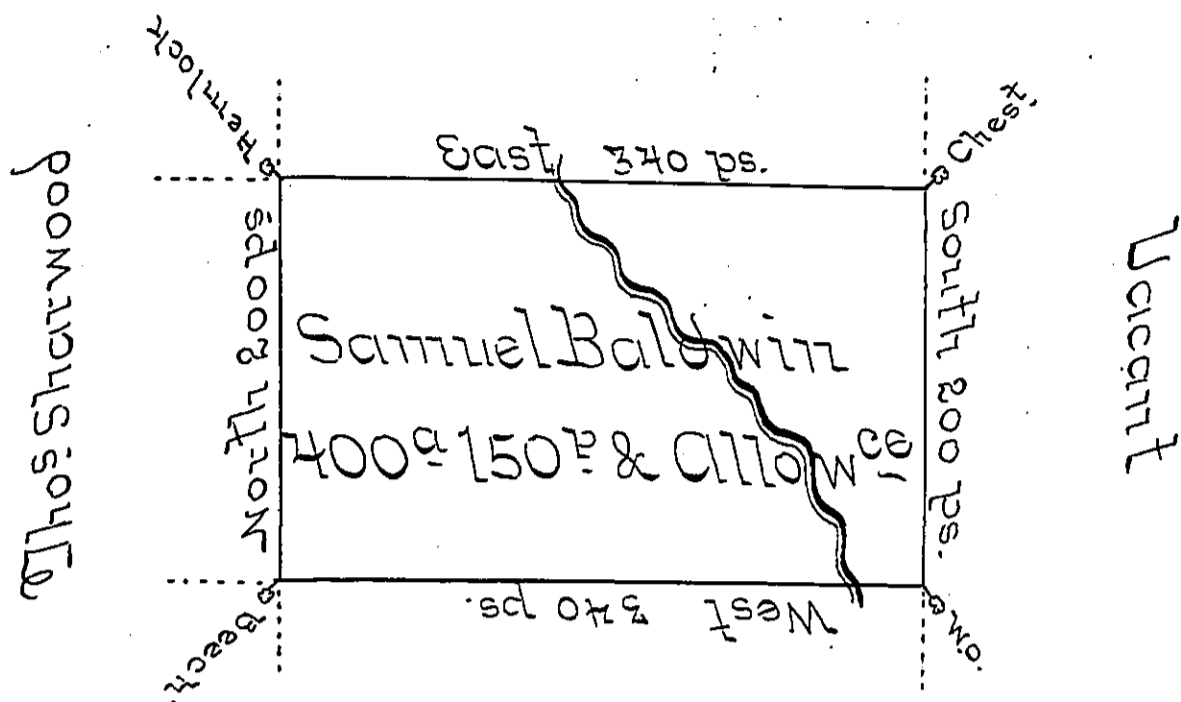


Thos Baldwin



Isaac Baldwin

A Draught of a Tract of Land situate on the Wa oblt^d Little Sugar Creek in the County of Luzerne, Containing 400. hundred Acres, 150 perches & Allow^{ce} of six PC^t for Roads &c. Surveyed July 22nd 1793 on a Warrant to Samuel Baldwin dated the 13th Aug^t 1792.

Jo Wallis D.S.

To Daniel Brodhead Esq^t
Surveyor General

IN TESTIMONY that the above is a copy of the original remaining on file in the Department of Internal Affairs of Pennsylvania, made conformably to an Act of Assembly approved the 16th day of February, 1833, I have hereunto set my Hand and caused the Seal of said Department to be affixed at Harrisburg, this first day of August 1899.

James W. Latta
Secretary of Internal Affairs.